

# **Web Experience Management Audit Release Notes**

10.5.1

2015-04-24

## Contents

<b>Web Experience Management Audit Release Notes .....</b>	<b>2</b>
<b>1 Introduction .....</b>	<b>3</b>
1.1 Release Notes Revision History .....	3
<b>2 About Web Experience Management Audit.....</b>	<b>3</b>
2.1 New Features .....	5
2.1.1 Using OTDS Groups for role mapping .....	5
2.1.2 Insights logout at OTDS level.....	5
<b>3 Packaging and Documentation .....</b>	<b>5</b>
3.1 Packaging and Delivery Information.....	5
<b>4 Supported Environments and Compatibility.....</b>	<b>6</b>
4.1 Supported Systems .....	6
4.2 Compatibility Matrix .....	6
4.3 Language Support .....	6
<b>5 Installation and Upgrade Notes .....</b>	<b>7</b>
5.1 Installation Notes .....	7
5.2 Upgrade Notes .....	7
<b>6 Fixed Issues.....</b>	<b>8</b>
<b>7 Contact Information .....</b>	<b>10</b>

## 1 Introduction

These Release Notes provide an overview of Web Experience Management Audit 10.5.1, including new features, delivery information, and supported platforms. OpenText recommends that you read these Release Notes in conjunction with the documentation included with the software package. If any conflicts exist, the Release Notes supersede the other documentation.

We also recommend that you check the OpenText Knowledge Center (<https://knowledge.opentext.com/>) for any patches or documentation updates that may have been posted after the initial release of Web Experience Management Audit 10.5.1.

### 1.1 Release Notes Revision History

Release Notes Revision Number	Modification Date	Section Modified	Modifications
1.0		All	Initial release

## 2 About Web Experience Management Audit

This section provides an overview of Web Experience Management Audit 10.5.1.

Web Experience Management Audit 10.5.1 includes the following new features.

Web Experience Management Audit and Audit Enhanced 10.5.1 provides views into historical events that allow organizations to track and report system changes to meet their operational, legal and regulatory compliance requirements. The Web Experience Management Auditing solution is specifically designed to gather information from Web Experience Management. The major features of the solution are:

- Gathering of usage information of Web Experience Management Console and Deployment Agents, including content instances (creation, modification, deletion, publishing, unpublishing), static files, content types, sites and channels.
- Auditing of search operations requested by the user from Web Experience Management Console.
- Gathering of changes made with Web Experience Management Configuration Console, including variables added, deleted, and modified, as well as and commit operations.
- Auditing of workflow processes.

- Integrated views into the history of each object registering events within the Web Experience Management Console.
- Enhanced installer that support Web Experience Management cluster installation.
- Configurable event filter mechanism at origin that allows:
  - Do not register events for some specific users (black list).
  - Disable all events (switch off Web Experience Management Audit)
  - Disable specific events or specific branches of events at Event Tree. (at any level)
  - Disable events for specific Content Types.
  - Disable/enable specific workflows/tasks.
  - Allow any combination of previous filters
- History button allow to View Details instead of XML applying a XSLT transformation if the corresponding Content Type have that XSLT associated. This feature can be disabled at configuration.
- Open Text Insights, an optional advanced report and analysis application only available with Web Experience Management Audit Enhanced. It provides the ability to run parametric reports across events, users, and time periods:
  - Console and online help available in English or Spanish depending of the selected language at login page.
  - The **Admin** tab includes:
    - Event model order feature, which allows you to order the event tree to accommodate it to the users preferences
    - Skin editor, which is used to customize OpenText Insights appearance
    - Segments editor, which allows configuring segments that are interesting to produce reports. A segment corresponds to an LDAP group or, for more dynamic segments, a specified query.
  - My Reports functionality:
    - Allows to each user to save their usual reports (only graphic reports, not available for search reports) and organize them into folders.
    - Saved reports can be executed at any time by the user.
    - Saved reports can be scheduled to be executed periodically by the system and send them by email to the specified addresses.
    - Each report can have multiple schedules associated.
    - Each schedule allows multiple options. Specific periods, hours and even cron-like expressions for finer reporting.
    - Reports in Excel or CSV format
  - Open Text Insights provides four different report types that allow you to audit, monitor, and analyze your content management and web site usage data:
    - **Evolution:** A line chart that lets you see how something progressed through time, e.g. the number of static files created each day or the number of unique website visitors

- **Top:** A bar chart that lets you see the top or bottom number of occurrences for a given event, e.g. What type of content instances were created the most in the past 30 days?
- **Distribution:** A pie chart that lets you compare the values of the event occurrences, e.g. What type of events are occurring within your content instances and what is their change rate relative to all events?
- **Search:** A listing report of events and the associated details.

The examples above are samples of the reporting capabilities of Open Text Insights and its reporting modules. You can also apply powerful filters that will provide you with vital information about what is happening through your site.

## 2.1 New Features

### 2.1.1 Using OTDS Groups for role mapping

This version of Web Experience Management Audit will now use OTDS Groups instead of OTDS Access Roles in order to map the roles of the user when accessing the Insights console, when using OpenText Directory Services (OTDS) for authentication. This means that the categorization of the user will now depend on the groups that the user belongs. It will be needed only 1 Access Role in order to associate the groups of users with the Resource.

For more information and concerns related with this change, please refer to Web Experience Management Audit 10.5.1 (Install and Configuration Guide).

### 2.1.2 Insights logout at OTDS level

If you are using OpenText Directory Services for authentication in Insights, the logout action performed at Insights will now end the session at OTDS level, respecting the Single Sign-On.

## 3 Packaging and Documentation

Downloads and documentation for Web Experience Management Audit are available in the OpenText Knowledge Center (<https://knowledge.opentext.com/>).

### 3.1 Packaging and Delivery Information

The software and documentation for Web Experience Management Audit includes:

- Web Experience Management Audit 10.5.1 (Install and Configuration Guide)
- Web Experience Management Audit 10.5.1 (User Guide)

## 4 Supported Environments and Compatibility

This section provides details on supported platforms and version information.

### 4.1 Supported Systems

Web Experience Management Audit supports the operating systems and other related software versions that listed in the Web Experience Management Supported Platforms Matrices, with the exception of IBM DB2 databases; IBM DB2 databases are not supported.

Running Web Experience Management Audit software in a configuration that is not listed in these matrices may result in unpredictable performance and is not supported.

Web Experience Management Audit 10.5.1 is compatible with:

- Web Experience Management 10.5 | [Supported Platform Matrix](#)

### 4.2 Compatibility Matrix

For details on compatibility between OpenText products, refer to the Compatibility Matrix (<https://knowledge.opentext.com/knowledge/llisapi.dll/open/15507401>) in the OpenText Knowledge Center.

### 4.3 Language Support

Web Experience Management Audit is currently localized in the following languages. Future releases may add additional languages.

Component	Languages							
	EN	DE	JA	FR	IT	ZH	ES	RU
WEM Audit Button	B							
Insights console	B						B	

UI = user interface only

B = both user interface and online help

## 5 Installation and Upgrade Notes

This section provides additional installation and upgrade information, including related or third party product information and any required critical patches.

### 5.1 Installation Notes

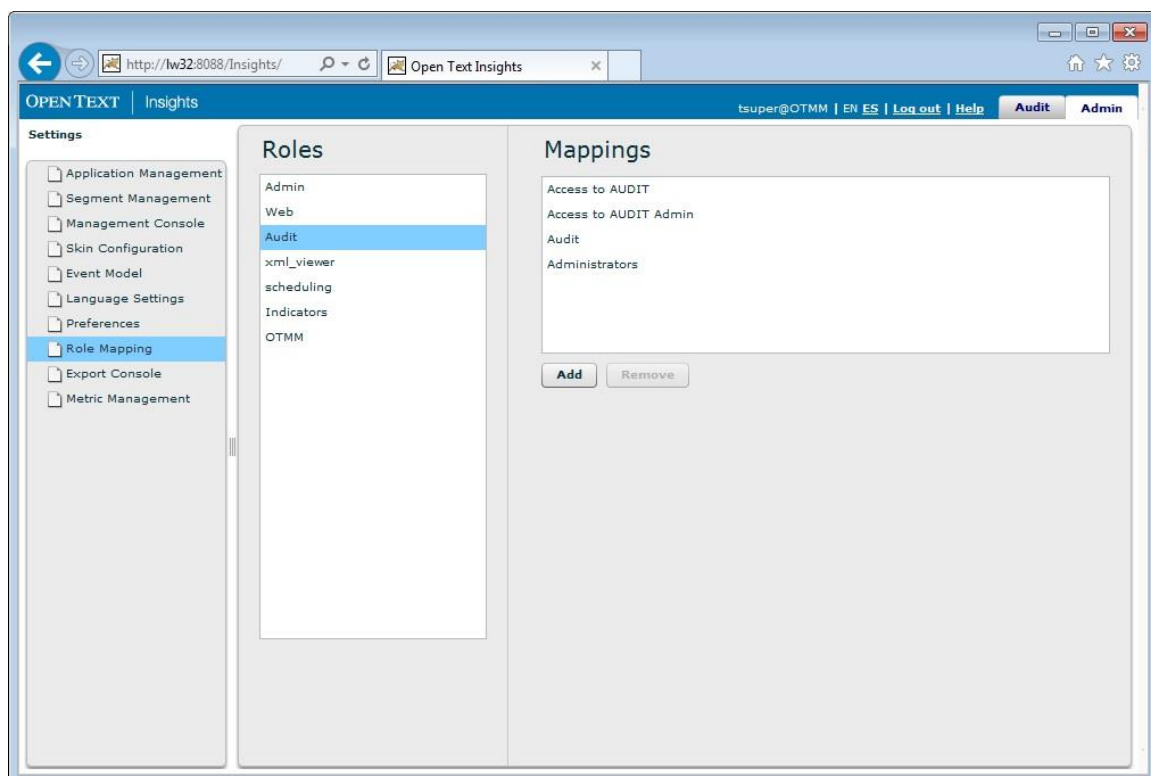
Before you install Web Experience Management Audit, review these additional installation notes and verify related product or third party product requirements.

Please refer to the Web Experience Management Audit 10.5.1 Installation and Configuration Guide.

### 5.2 Upgrade Notes

If you're going to upgrade Web Experience Management Audit 10.5 to version 10.5.1, and you are using OpenText Directory Services for authentication, take in consideration the new feature of using OTDS Groups instead of OTDS Access Roles for role mapping in RTB.

Before the upgrade, you must map the OTDS Groups in Insights Admin tab. If you don't do that, you will not have access to Insights after the upgrade, as you don't have the OTDS Groups mapped to the RTB roles.



So, you must follow these steps:

1. Open Insights console, login with a user with administration privileges and navigate to the Admin tab.
2. Navigate to the Role Mapping section and provide OTDS Groups for each one of the roles, accordingly to your needs.
  - a. **Tip:** We advise you to use 2 different groups: one for normal access and another one for administration purposes. Probably, you're already using 2 Access Roles for that, you just need now to use Groups instead of Access Roles.
3. Perform the upgrade as described in OpenText Web Experience Management Audit 10.5.1 (Installation and Configuration guide).
4. You can delete the Access Roles mapped to the RTB roles after the upgrade.

If you wish to continue using Access Roles in order to map the RTB roles and categorize the users after the upgrade, you can use the option **auth\_groups=disabled** in the table **TBRTB\_PROPERTIES**. You can use this script to update it:

```
INSERT INTO tbrtb_properties (propkey,propvalue)
VALUES ('auth_groups', 'disabled');
```

## 6 Fixed Issues

This section provides information about past issues that have been fixed in this release.

Issue Name	Issue Description
Error with the installer when using multiple disk drives on Windows	Reported problem related with the installation process on Windows when performing an installation where the installation folder is in a different disk drive of the installer folder, giving the error: <i>Error obtaining DataSource for DB connection pool:null.</i>
Error upgrading WEM Audit performing <i>getVCMInstaceName</i>	Reported problem when upgrading WEM Audit in the step where the installer gets the VCM Instance Name. Fails with a <i>NullPointerException</i> error.
OTDS 10.5 SP1 Patch 5 compatibility problems	Reported problems accessing Insights console when using OpenText Directory Services 10.5 since patch 5. Could not obtain the groups of the user.

Issue Name	Issue Description
OTDS support in RTB Loader	The RTB Loader utility now works with OTDS instead of LDAP, if you specify the parameter <code>-otdsFile</code> instead of the parameter <code>-ldapFile</code> . You must use one of them, and never both.
RTB Loader continue without groups	Fixed a bug that blocked the RTB Loader utility from begin executed without groups information for segmentation.
Missing json.jar in installer classpath	Fixed the missing json.jar reference in the installer classpath.

## 7 Contact Information

OpenText Corporation  
275 Frank Tompa Drive  
Waterloo, Ontario  
Canada, N2L 0A1

Email: [support@opentext.com](mailto:support@opentext.com)

Knowledge Center: <https://knowledge.opentext.com>

For more information, visit [www.opentext.com](http://www.opentext.com)